



Westinghouse

QTY.	TYPE	MODEL #

Westinghouse Lighting Solutions
ACCESSORIES FOR INDUSTRIAL LIGHTING

Occupancy Sensor Options *(for use with WLS Sensor-ready models) (Suffix SR)*

NOTE: Add suffix SR to light fixture model number to specify unit pre-wired for plug-in sensor assembly.

Features & Benefits

- Detects infrared energy
- Mounts to 45 feet
- Factory set at 10 minutes to keep lights on during periods of no activity
- 14° to 160°F operation unless otherwise specified
- SensorSwitch® brand or Leviton-use prefix OSF-HU-ITW

Ordering Information (Unit will be shipped as a separate line item)

CMRB - 6P - 277

CMRB – Highbay
Occupancy Sensor
Plug-in assembly

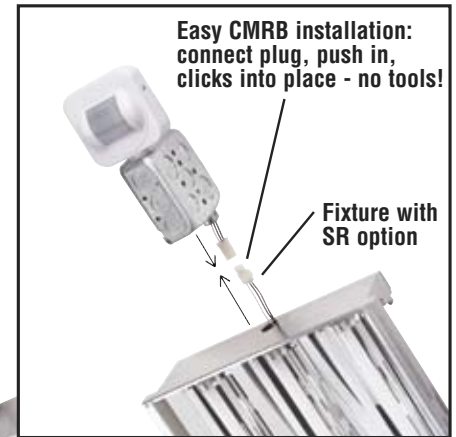
6 – Open Space
360° Field of View

50 – Aisle Application
50° Field of View

Voltage
120-277 VAC
347-480 VAC

P = Photocell Override
(for space with skylight)

No tools, CMRB
clicks into housing



Lens Kits / Swing Door *(Available on Full-Body or Hybrid fixtures)*

Features & Benefits

- Lens kit for food service, cool, or dirty areas...See RF Series for Freezer/Frig areas
- Steel hinged door with .125 clear acrylic lens, wired guard, or louvers
- Cam latch to ensure a secure closure of the fixture

Ordering Information

DKA - H-14 - 4

H = Hybrid Body
FB = Full Body

Body Style

7-Full Body 7" wide
10-Full Body 10" wide
14-Full Body 14" wide

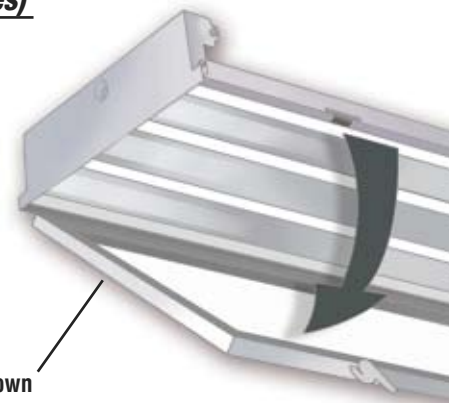
8-Hybrid 8" wide
12-Hybrid 12" wide
14-Hybrid 14" wide
19-Hybrid 19" wide
25-Hybrid 25" wide

Door frame drops down
for easy lamp maintenance

DKA-H-12-4 Shown

DKA = Lens Door Kit w/ .125 Acrylic Lens (Clear)
DKW = Lens Door Kit w/ Flat Wire Guard (Chrome)
DKL = Lens Door Kit Fitted with Louver (Specify)

4 = 4' Fixture
8 = 8' Fixture (2 Sets)



Wire Guards / Open End Wrap Style

Features & Benefits

- Chromed finish
- Easy attachment / set screw / hardware included
- Hinged from either side

Ordering Information (note: guard EC/EA Series WGK-EC44 etc.)

WGK - FB - 7 - 4

WGK = Wire Guard
(Chrome Finish)

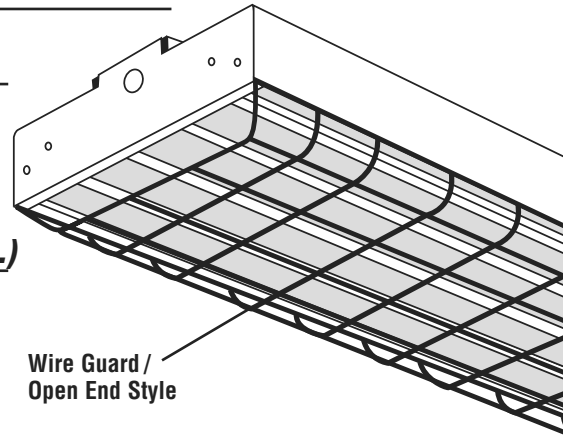
H = Hybrid Body
FB = Full Body

Body Style

7-Full Body 7" wide
10-Full Body 10" wide
14-Full Body 14" wide

8-Hybrid 8" wide
12-Hybrid 12" wide
14-Hybrid 14" wide
19-Hybrid 19" wide
25-Hybrid 25" wide

4 = 4' Fixture
8 = 8' Fixture (2 Sets)



Wire Guard /
Open End Style

WGK-FB-10-4 Shown

Note: For flat wire guard indoor frame
see DKW series

Ballast Options

Westinghouse Lighting Solutions offers several ballasts options, such as the 347-480 volt ballast or dimming ballast. We reserve the right to ship Advance™, Sylvania™, GE™, Universal™ or Westinghouse brand ballasts without prior notification, unless otherwise specified.

Cord Set Options / Specify

Westinghouse Lighting Solutions can prewire a whip / cordset by applying a suffix to the model number e.g. C01 etc. or we can ship the cordset separately for field installation using this nomenclature:

CS-WP-L7-15 -277- 15FT

Cord set

WP = black whip
SB = standard blade 120v
TL = Twist & Lock

See price book for matching suffix
to have cord attached to fixture, e.g. C01, C05, C06 etc

(specify NEMA configuration)

Voltage rating

8FT= 8' length
15FT = 15' length
(Black unless otherwise specified)



Fluorescent Lamps / Specify

Westinghouse Lighting Solutions can offer lamps with your order however, adders may apply and you must specify....

Specify suffix L01 for T5 4100K/841 or L02 for T5 5000K/850 Lamps. Consult factory or price book for suffix needed for your job. Coated lamps are also available. We reserve the right to ship Philips™, Sylvania™, GE™, or Westinghouse brand lamps without prior notification, unless otherwise specified.

Call 1-800-671-6799 EST, 215-671-2029 outside the U.S. or log on at www.westinghouse-ls.com

Westinghouse Lighting Solutions is an affiliate of Westinghouse Lighting Corporation, Philadelphia, PA 19154-1029, U.S.A.
Westinghouse Lighting Corporation, a Westinghouse Electric Corporation licensee.

Ⓜ "Westinghouse" and "You can be sure...if it's Westinghouse" are all registered trademarks of Westinghouse Electric Corporation.

